

**UBC COMMISSION ON URBAN PLANNING SEMINAR**

# **“ELBLĄG CITY CENTRE 2040”**

**ELBLĄG, POLAND, OCTOBER – 1ST – 3RD 2012**

**GROUP 1**



**Until the late 1980s, Elbląg had no old town**  
**Previous city centre of Elbląg has disappeared from the city map for over 40 years**











**Riverside promenade is now empty  
River banks have the great potential for creating the  
living heart of the city centre**

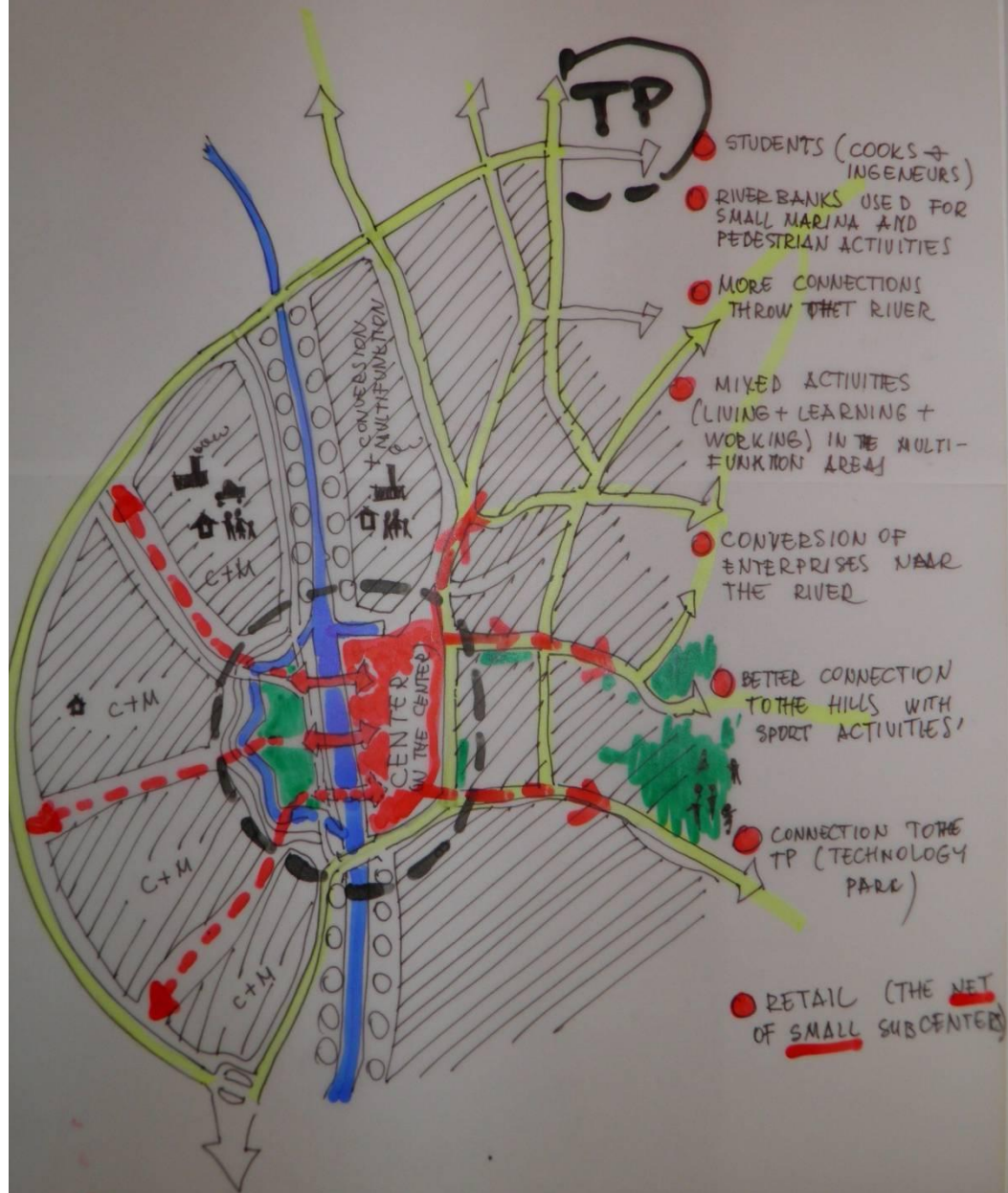














Another direction of movement



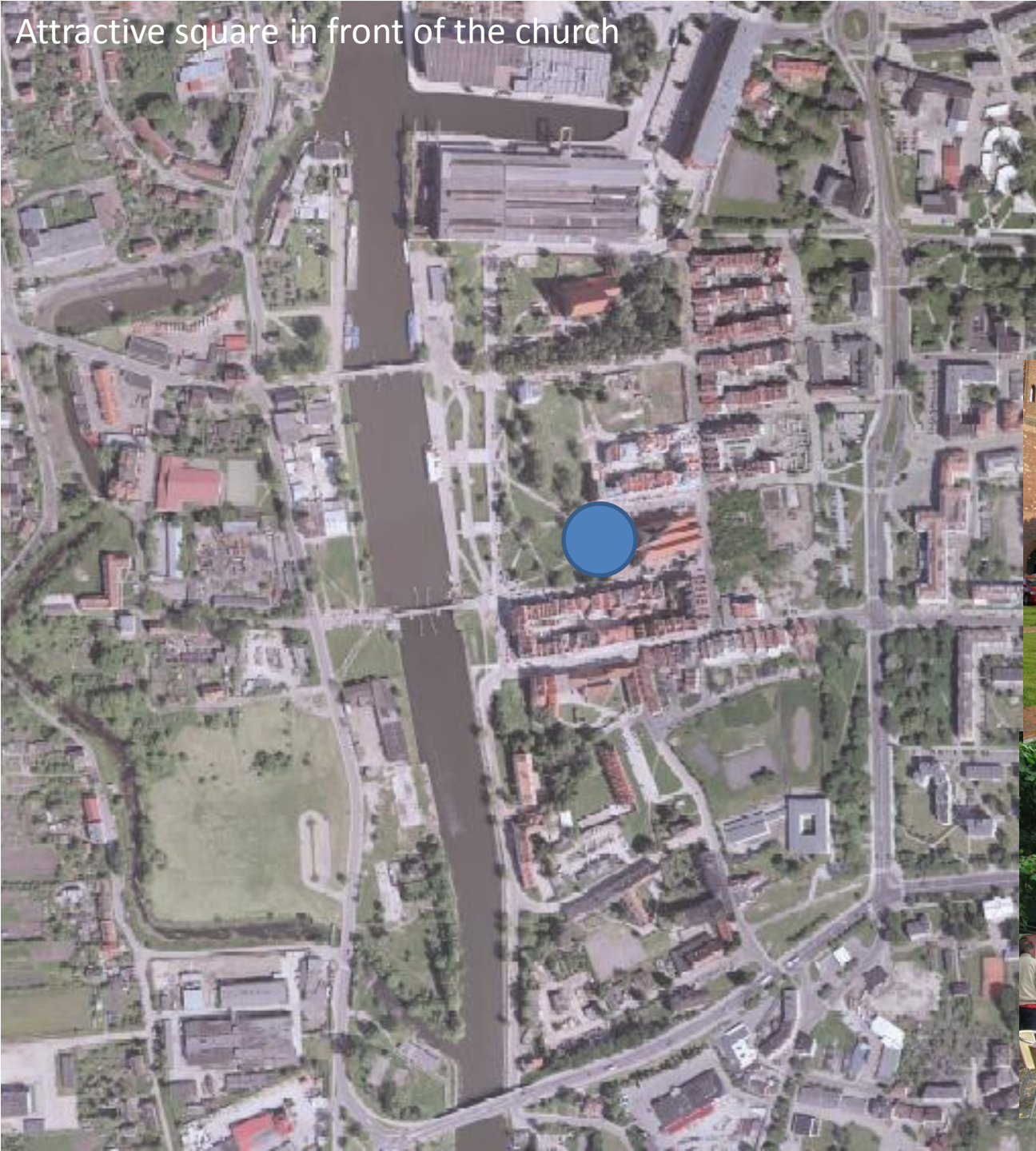


A hand-drawn sketch of a city block, overlaid on a faded aerial photograph. The sketch uses various colors and line styles to delineate different areas and features:

- Red:** Outlines building footprints and a central corridor. A red box is labeled "COMMERCIAL CULTURE".
- Blue:** Outlines a waterway or canal running vertically through the block. A blue box is labeled "MARINA".
- Green:** Fills in some of the building footprints.
- Black:** Outlines the main structure of the buildings.
- Annotations:**
  - "WATER FRONT" (circled in red)
  - "CHURCH SQUARE" (circled in red)
  - "SUNNY MARK" (circled in red)
  - "MARINA" (circled in blue)
  - "BOAT TRIP STOP" (circled in red)
  - "CANOE" (circled in red)
  - "NEW ARE" (circled in red)
  - "INT. COMPETITION" (circled in red)
  - "MOVE THE SCHOOL" (circled in red)
  - "SQUARE ON THE WATER" (circled in red)
  - "TO MOVE CULTURE TO THE CENTRE" (circled in red)
  - "PPD" (circled in blue)
  - "SMALL ARCH. ELEMENT AROUND THE (A) BASE" (circled in blue)
  - "WATER PERFORMANCES INSTALLATIONS" (circled in blue)



Attractive square in front of the church



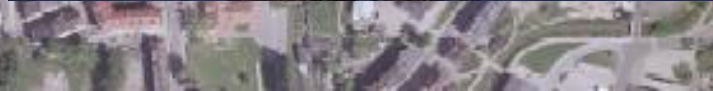
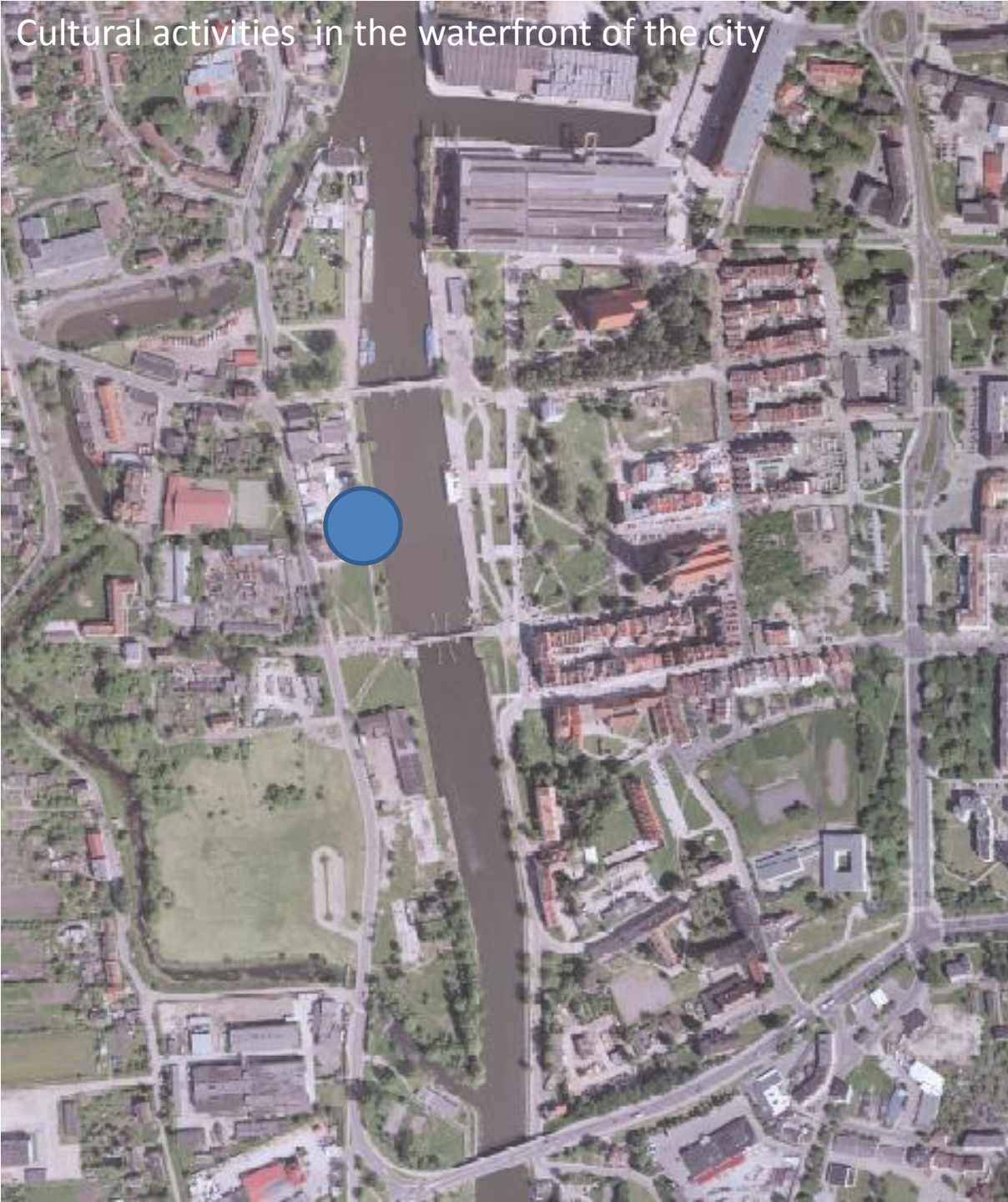


# Cultural activities in the waterfront of the city



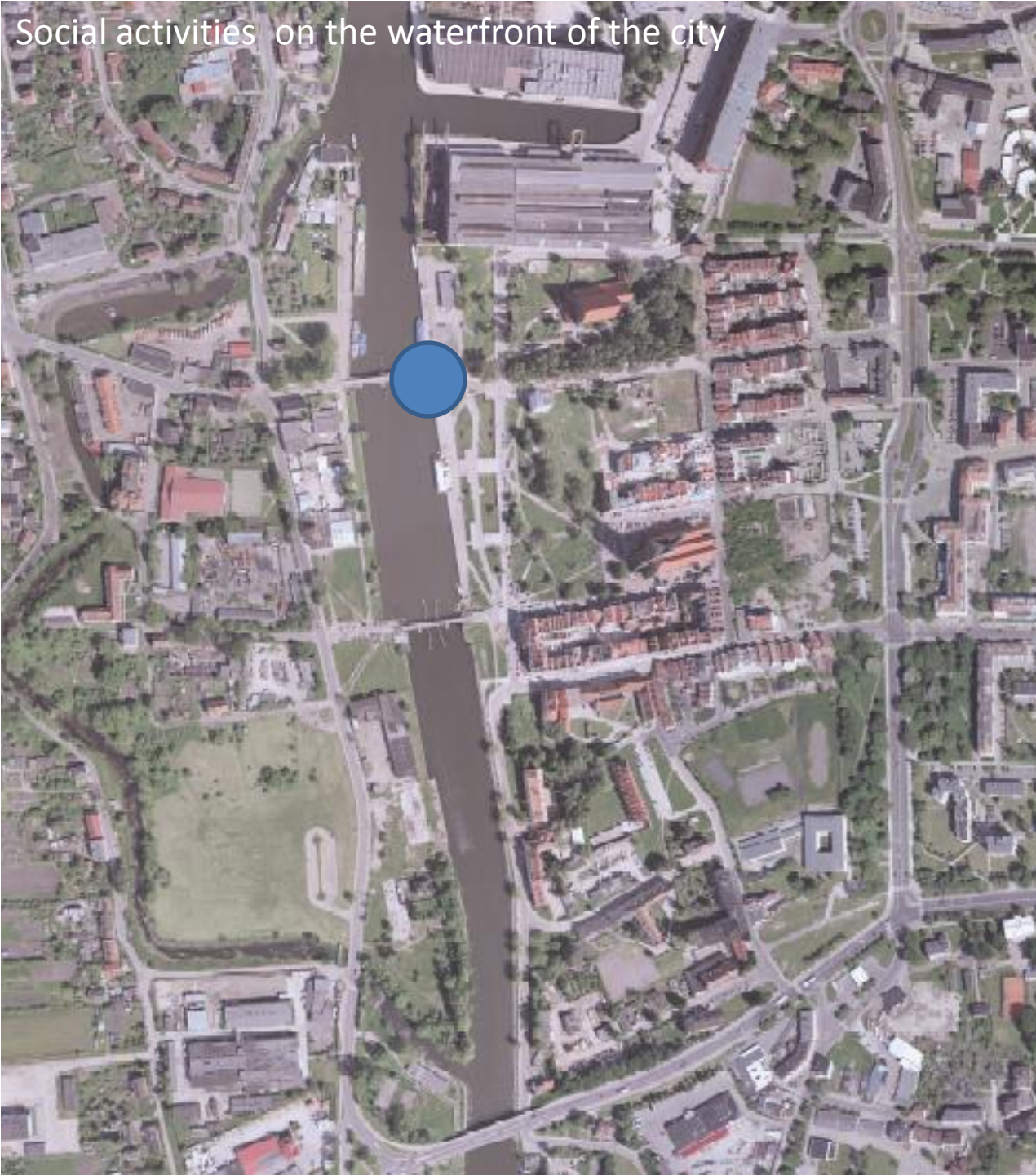


# Cultural activities in the waterfront of the city



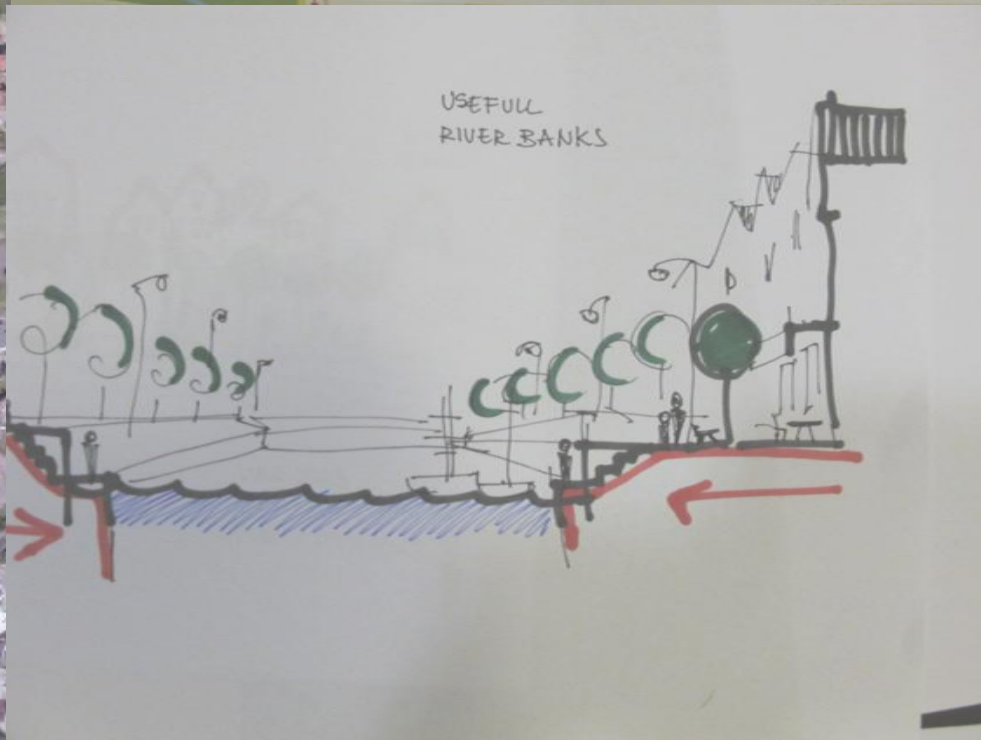
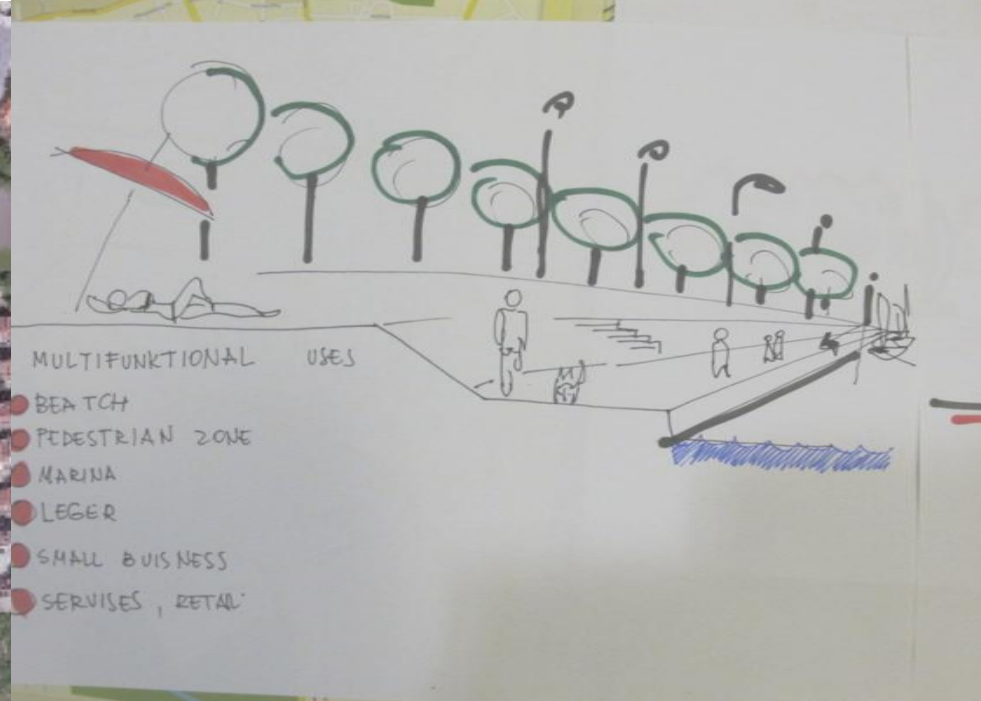
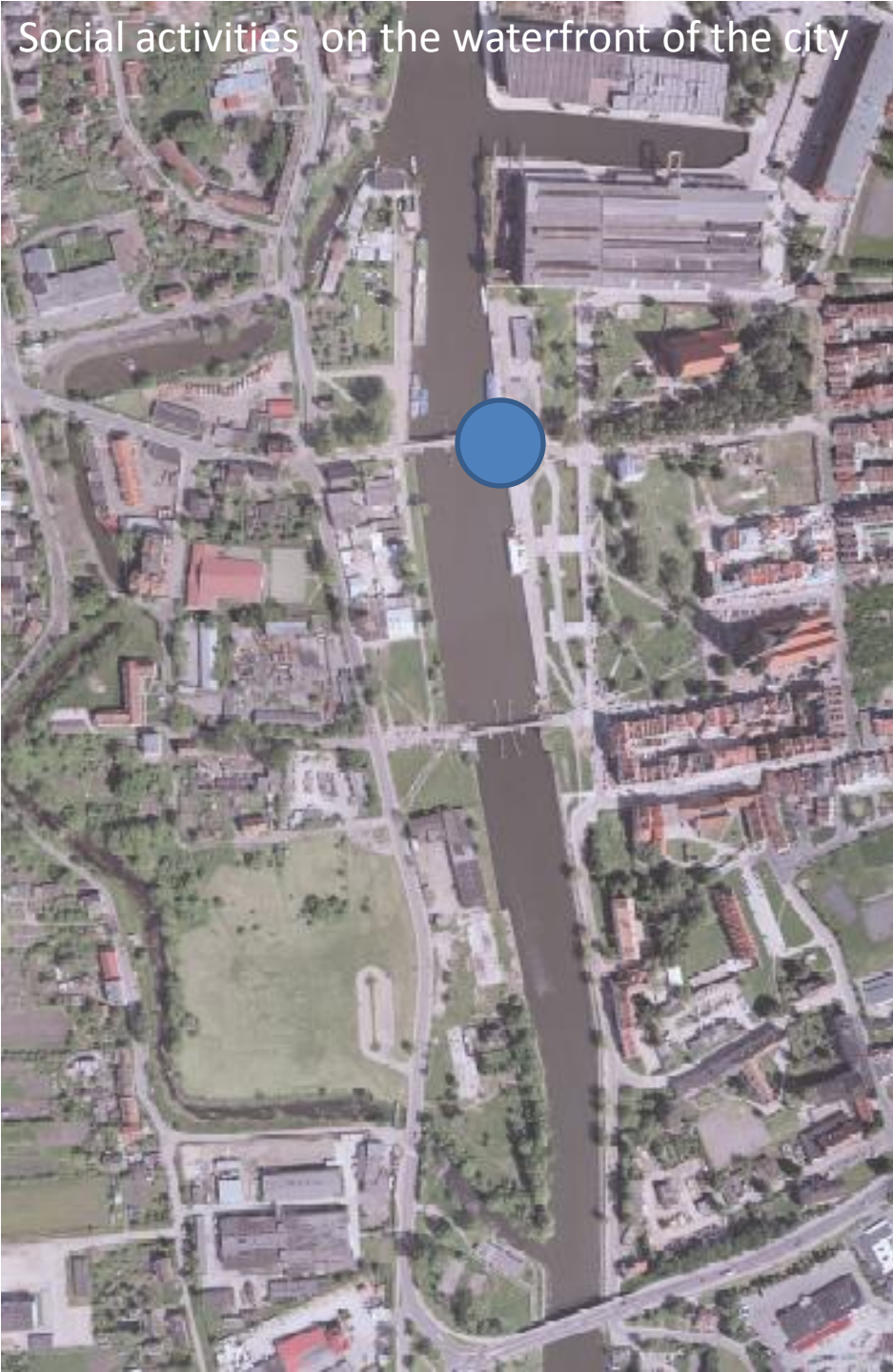


Social activities on the waterfront of the city





# Social activities on the waterfront of the city



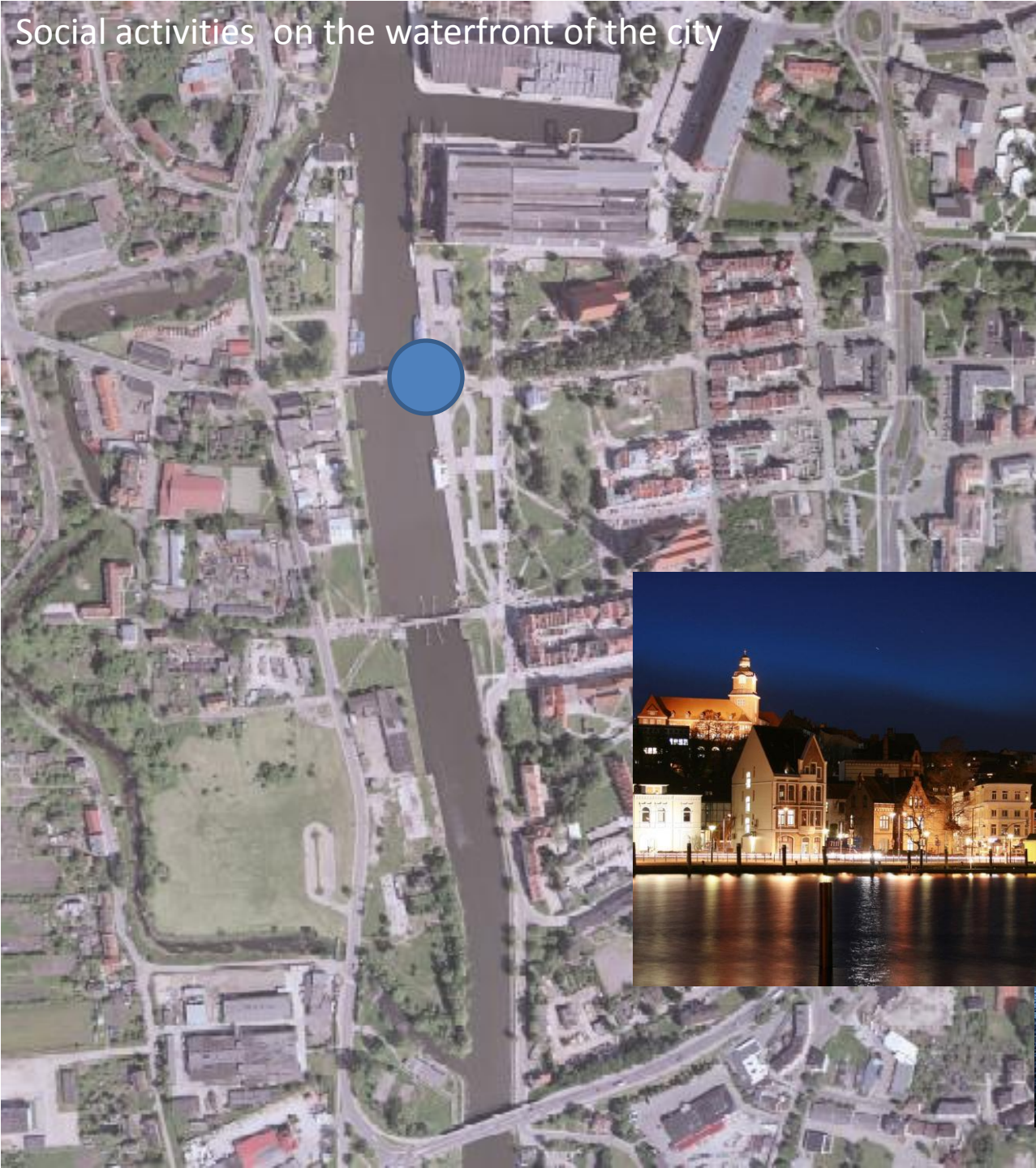


Social activities on the waterfront of the city





# Social activities on the waterfront of the city





New housing on the edge of the old city







**Group 1 is thanking You:**

**Henrik Pedersen, Aarhus, Denmark**

**Jaanika Koppel, Tartu, Estonia**

**Ryszard Biały, Gdańsk, Poland**

**Marek Karzyński, Gdynia, Poland**

**Uta Jahnke, Rostock, Germany,**

**Rasa Budryte, Šiauliai, Lithuania**

**Per Hänström, Umeå, Sweden**